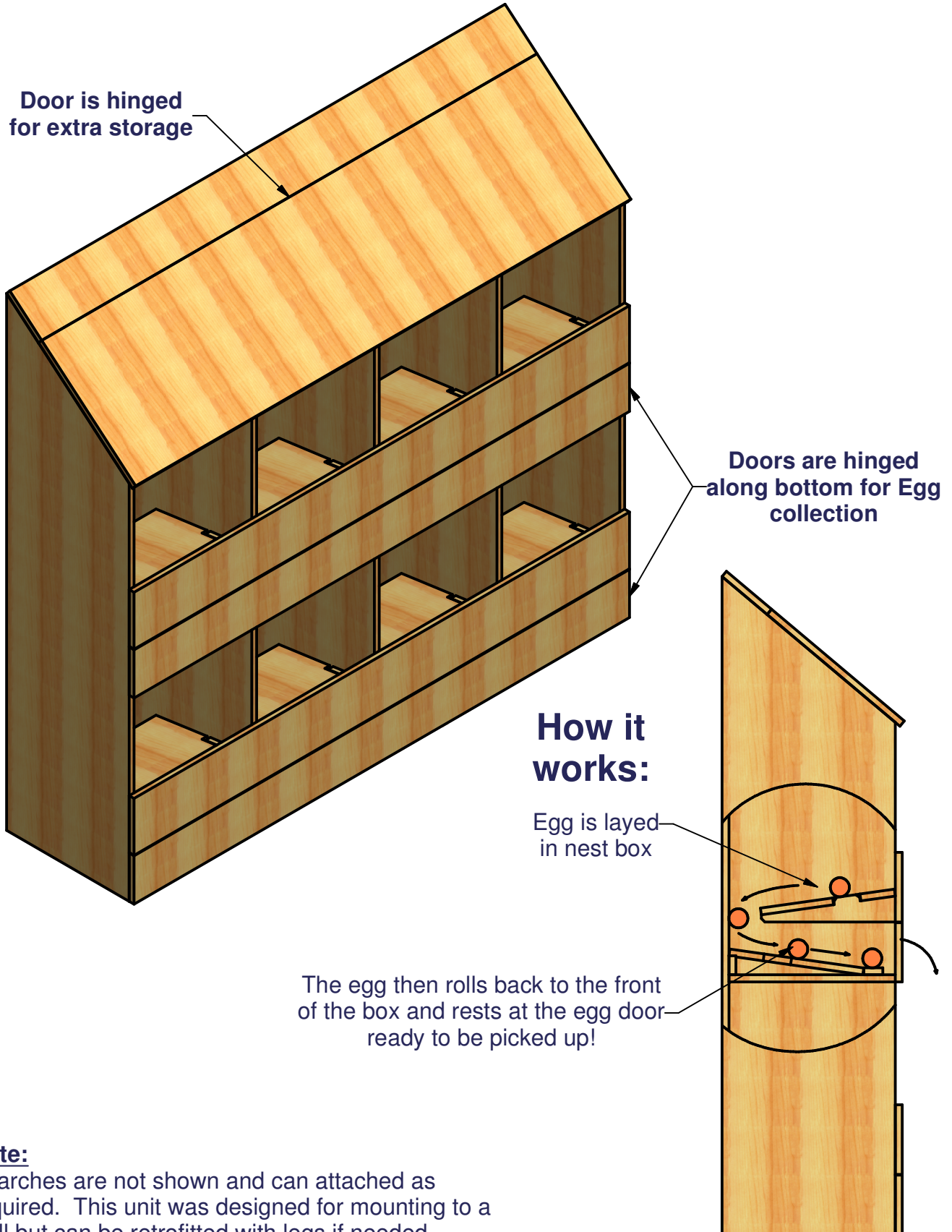
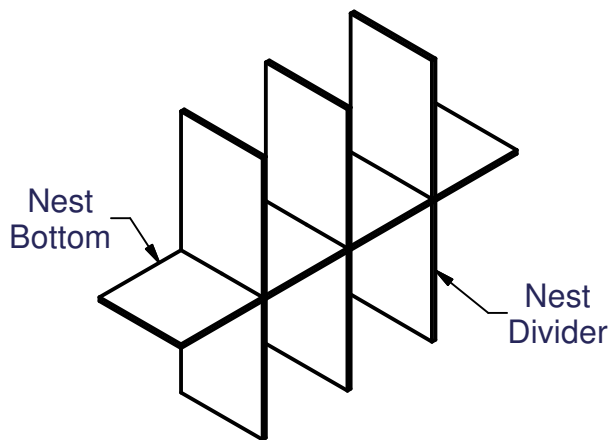


# Front Rollout Nest Box (8 Place)

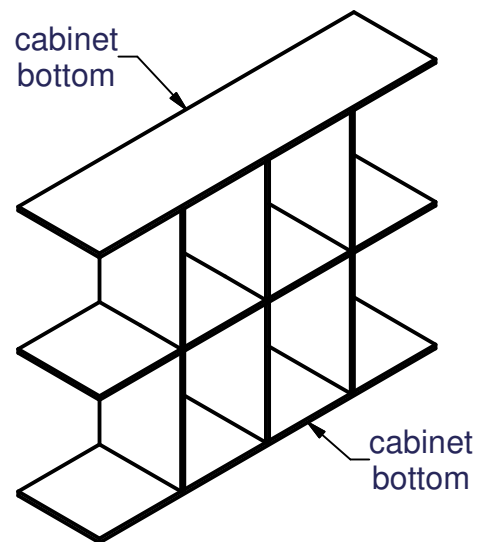


# Front Rollout Nest Box (8 Places)



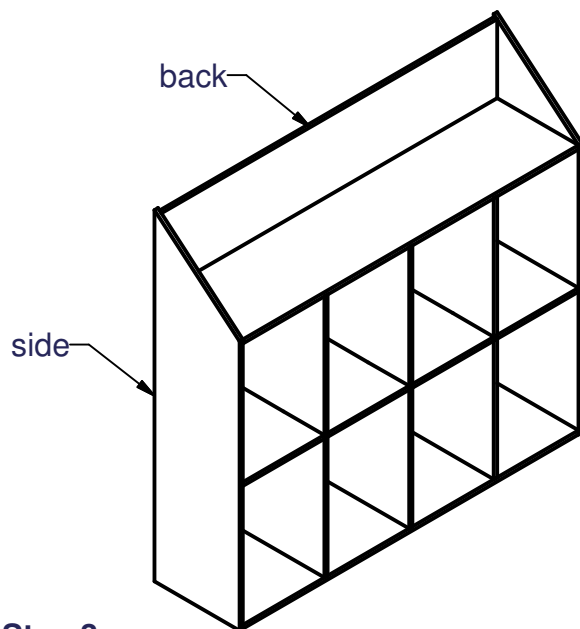
## **Step 1:**

Slide nest dividers onto nest bottom.



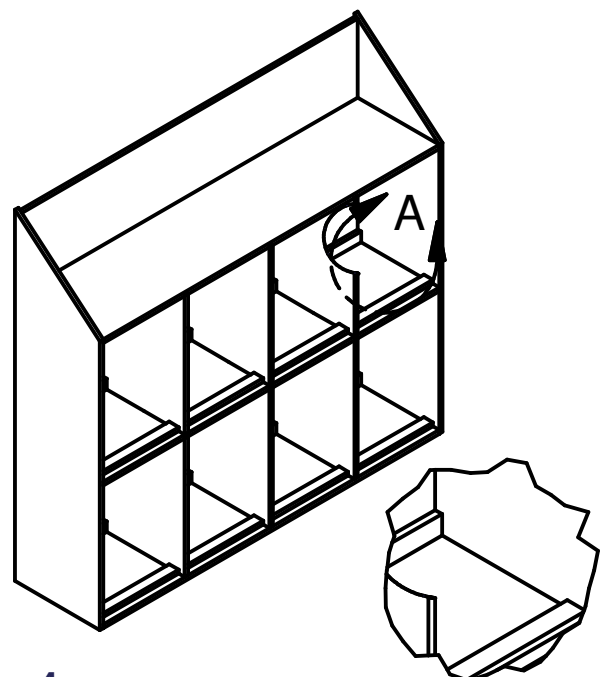
## **Step 2:**

Using nails assemble the top and bottom to the grid. Make sure everything is square and the front and back are flat before nailing.



## **Step 3:**

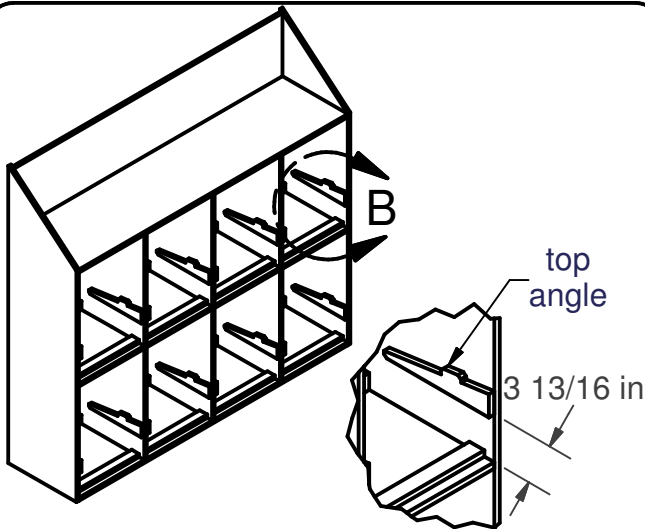
Place the back onto the grid, squaring grid to back. The grid should be flush with the sides and bottom of the back. Nail in place. Next attach the sides flush with the bottom and back of the grid.



## **Step 4:**

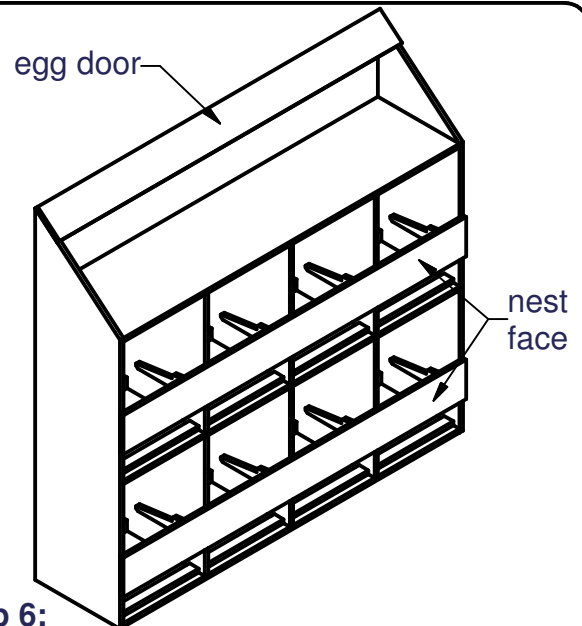
Place the bottom angle pieces in the bottom of each nest box (2 per box) and nail in place.

# Front Rollout Nest Box (8 Places)



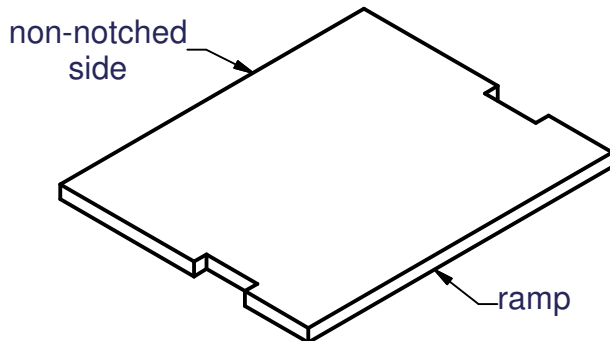
## **Step 5:**

Measure up 3 13/16" from the bottom of each nest box and make a line, using a level or square, the depth of the box. Place the top angle's lower edge on the line and make it flush with the front of the box. Clamp or hold in place and nail solid. Repeat for other side and other boxes.



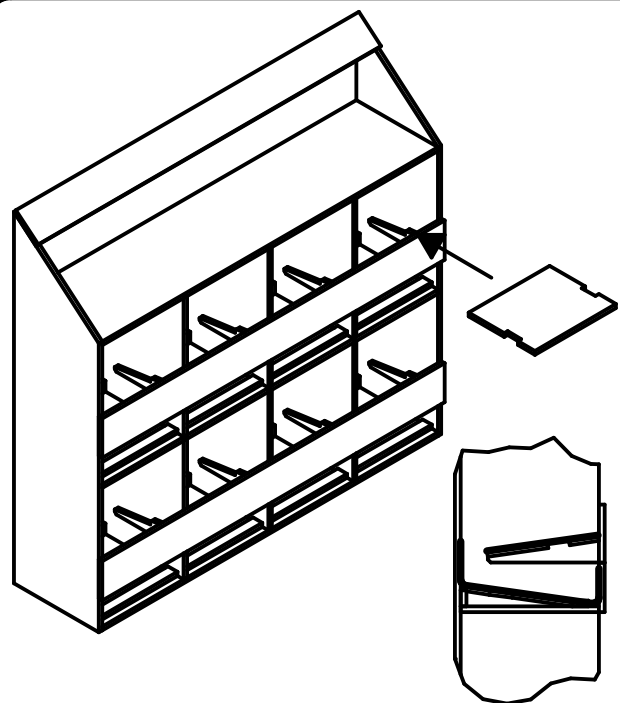
## **Step 6:**

Attach the nest face boards to the front making sure they are flush with the bottom of the top angles and to sides of the box. Using one of the 3 egg door boards, attach it flush with the back and sides at the top of the cabinet.



## **Step 7:**

Cover the ramps with a soft yet sturdy material that the birds will not be able to eat. A soft rubber mat such as an exterior rug will work. Take (8) of the ramps and cover one side with the material by either gluing or stapling. Take the remaining remaining ramps and cover with material but leave about 4 inches of material overhang the non-notched sides. (This is for the lower ramp)



## **Step 8:**

Insert the ramps into the nest boxes, bottom then top, with soft material as shown Above.